

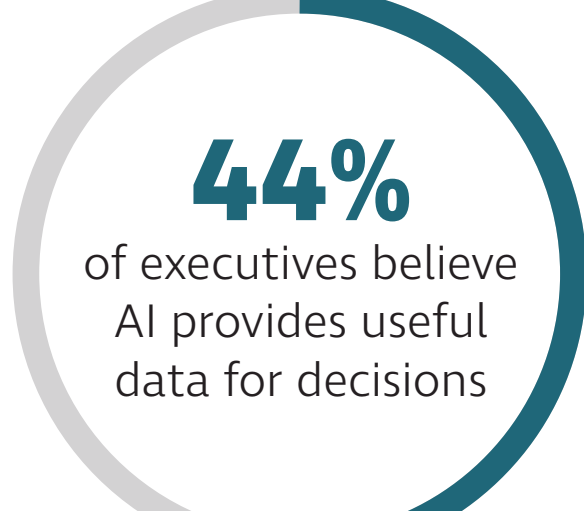
# How Artificial Intelligence is Transforming the Transport Industry

**BY 2021**  
**80%**  
 of emerging technologies will have AI

**BY 2023**  
 The global transport AI market will reach  
**\$3.5 Billion**

**BY 2030**  
 AI could add  
**\$13 Trillion**  
 to global economic output

While decision-makers recognise the value of AI, many aren't as familiar with the tech and its huge day-to-day benefits.



Business leaders will need to clearly demonstrate how AI will positively impact drivers and staff across the organisation.

## BUSINESS BENEFITS

By adding AI-enabled fleet management solutions, businesses can:



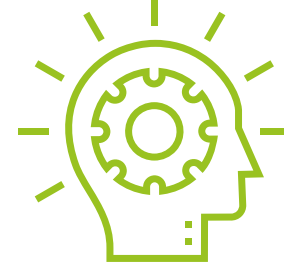
### UNCOVER

hidden insights and learnings



### PREDICT

future trends and risks



### UNDERSTAND

clear business actions

**9 OUT OF 10** executives agree AI represents a business opportunity

The key priorities for adopting AI include:



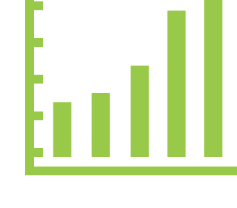
### Personalised insights and analytics



### Enabling digital transformation



### Identifying trends to streamline spend



### Boosting efficiency and compliance

## HOW AI CAN HELP WITH CUSTOMER SERVICE



### ANALYSE

customer habits and behaviours



### GUIDE

drivers via the best possible route

AI not only revolutionises processes within the business but improves customer service due to real-time insight and better communication.



### ANTICIPATE

and predict incoming risks



### ALERT

customers of arrival times

## HOW AI CAN HELP YOUR BACK OFFICE

Smart fleet management systems give operators a complete picture of their entire fleet with a few clicks.



### Gain

a big-picture view of the fleet



### Detect

driver or vehicle anomalies



### Respond

instantly to customer queries

## HOW AI CAN HELP WITH ACCOUNTING

AI automatically transforms big data into easily digestible reports, visual dashboards and actionable insights.

**44%** of companies say AI has reduced costs while...

**63%** report revenue increases



### Predict fuel use

trends to reduce costs



### Save hours

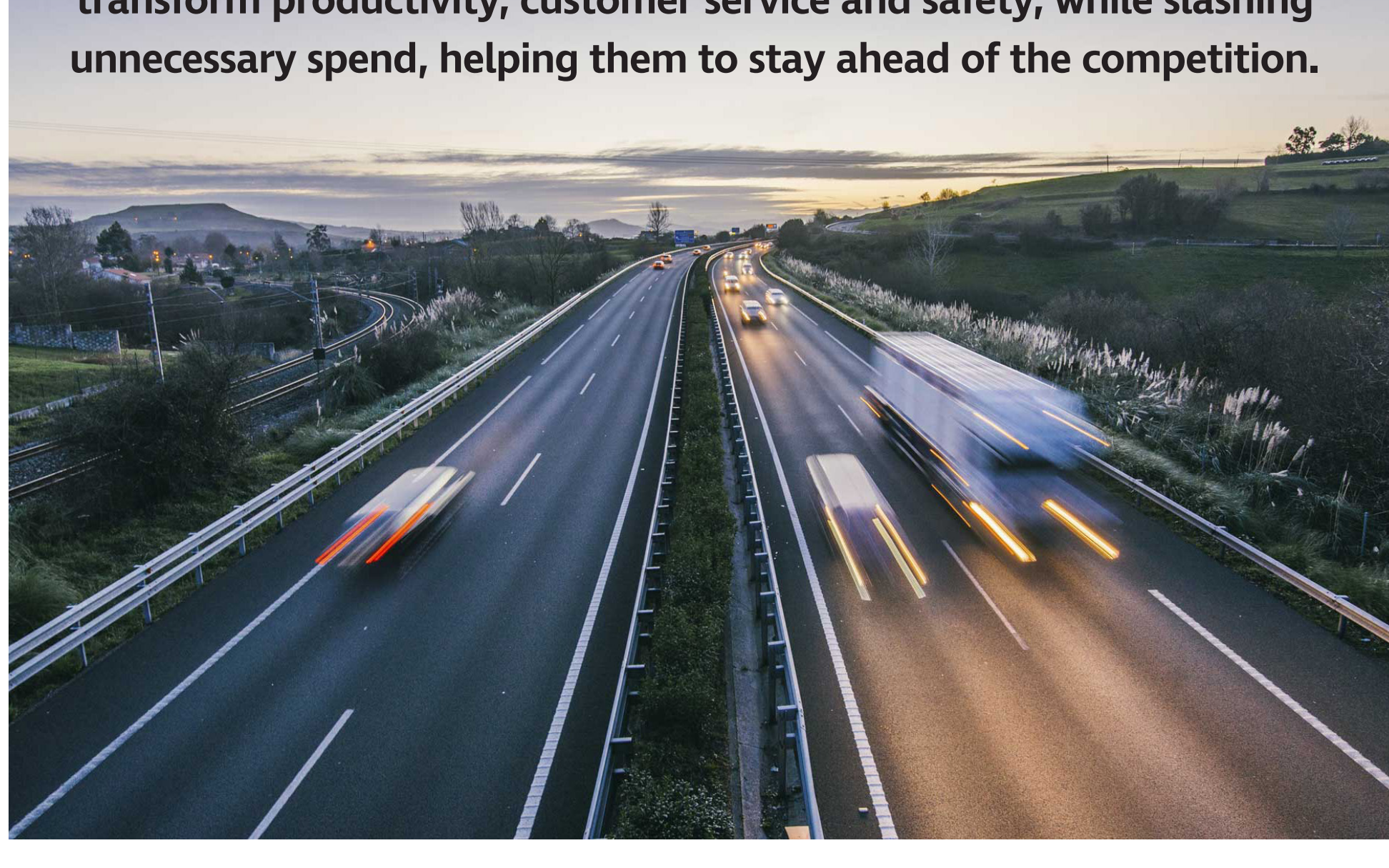
of manual data input



### Focus

on more strategic initiatives

Transport operators that adopt AI into their business will transform productivity, customer service and safety, while slashing unnecessary spend, helping them to stay ahead of the competition.



**0800 447 735**  
 TeletracNavman.co.nz

<https://www.gartner.com/en/documents/3...rough-2022>  
<https://www.psmarketresearch.com/press...ion-market>  
<https://www.ifc.org/wps/wcm/connect/7c...ID=mV7VCeN>  
<https://chatbotmagazine.com/the-impor...1194a0aa0b>  
<https://www.teletracnavman.com.au/reso...ark-report>

<https://go.headspringexecutive.com/AIReport>  
<https://advisory.kpmg.us/content/dam/a...rprise.pdf>  
<https://www.bcg.com/en-au/press/15octo...ng-with-ai>  
<https://www.mckinsey.com/featured-insi...ale-impact>